

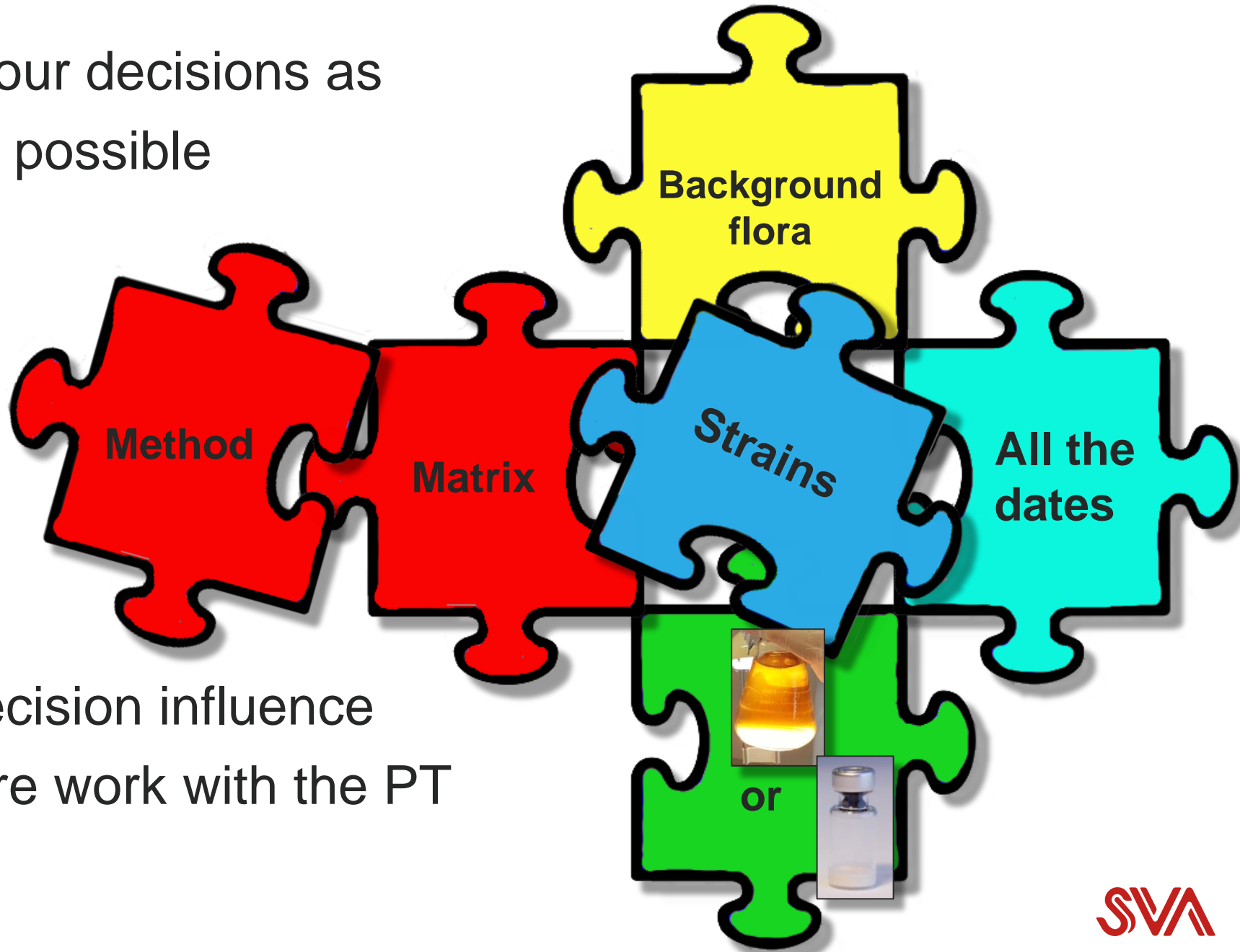


# PRACTICAL ASPECTS ON PT ORGANISATION AND OPERATION

Therese Jernberg and Linda Svensson  
*EURL-Campylobacter*

# DECISIONS

- Make your decisions as early as possible



These decision influence your future work with the PT

# COMMUNICATION

- Supplier of matrix
- Supplier of media
- Logistic department
  - if you send out a lot of PTs they have to be prepared.
- Lab which receives your PT

# ORDER MATERIALS

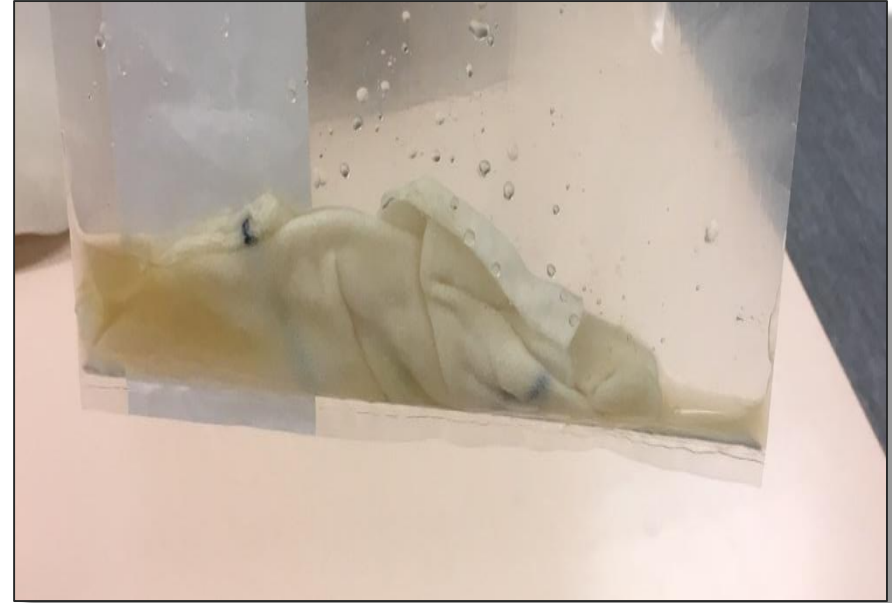
- Matrix
- Boxes: styrofoam, cardboard, packing material
- Freezer packs
- Bags, swabs, socks, clips what ever you have decided to use
- Vials
- Media

# PILOT SCHEME - MATRIX

Tests to mimic a real sample



20 ml Cary Blair



30 ml Cary Blair

Testing to make a sock sample

- Cary Blair
- Cecal content
- Litter

# PILOT SCHEME - MATRIX

Tests to mimic a real sample

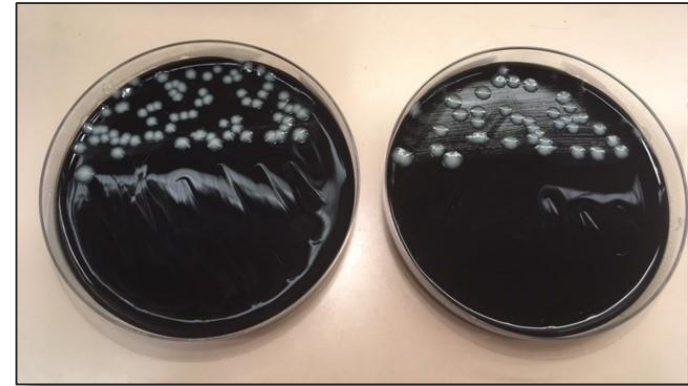


Cary Blair  
Ceacal material



# PILOT SCHEME - MIKROORGANISMS

- Background
  - How much?
  - Influence on the *Campylobacter*?
  - Survival over time?



- Vials
  - How do they work with your chosen matrix?

# PREPARATIONS OF THE ACTUAL PT FROM START TO FINISH

- Make checklists for eg material, tests, deadlines
- Check that you have all the material needed for the PT
- Label everything that will be sent to the laboratories
- Pack vials in bags
- Prepare matrix carrier
  - label
  - add matrix (could be done friday before weekend if you use vials)
  - put meat, vials etc in green transport container
- Live culture - be careful not to cross contaminate the samples



# PREPARATIONS OF THE ACTUAL PT FROM START TO FINISH

- Freeze the freezer packs. Can take time to freeze!
- Fold the outer cardboard boxes together
- Put the appropriate UN label on the cardboard box
- Address labels
- Book courier retrieval of the boxes containing the PT
- Prepare and print SOPs
- Start the temperature loggers if you use those
- Checklist to use during the packing of the PT

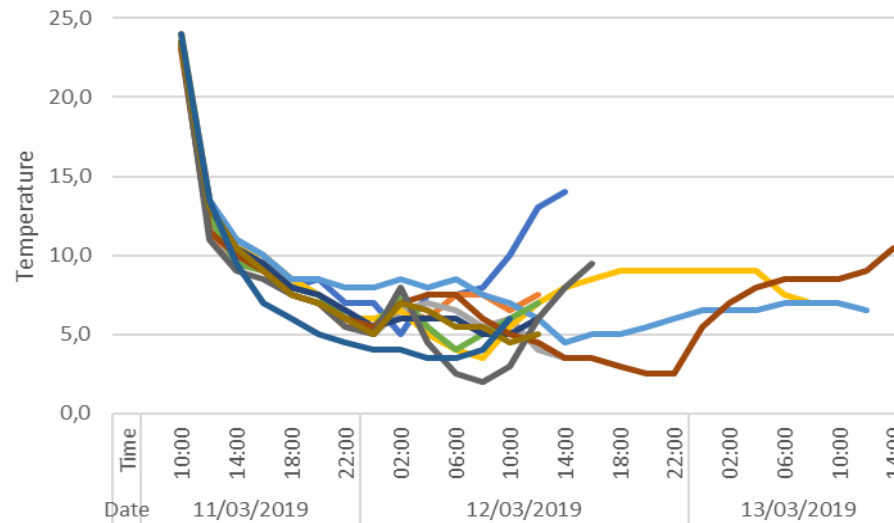
# PACKING THE BOX

- ADR
- IATA-DGR

# PACKING THE BOX

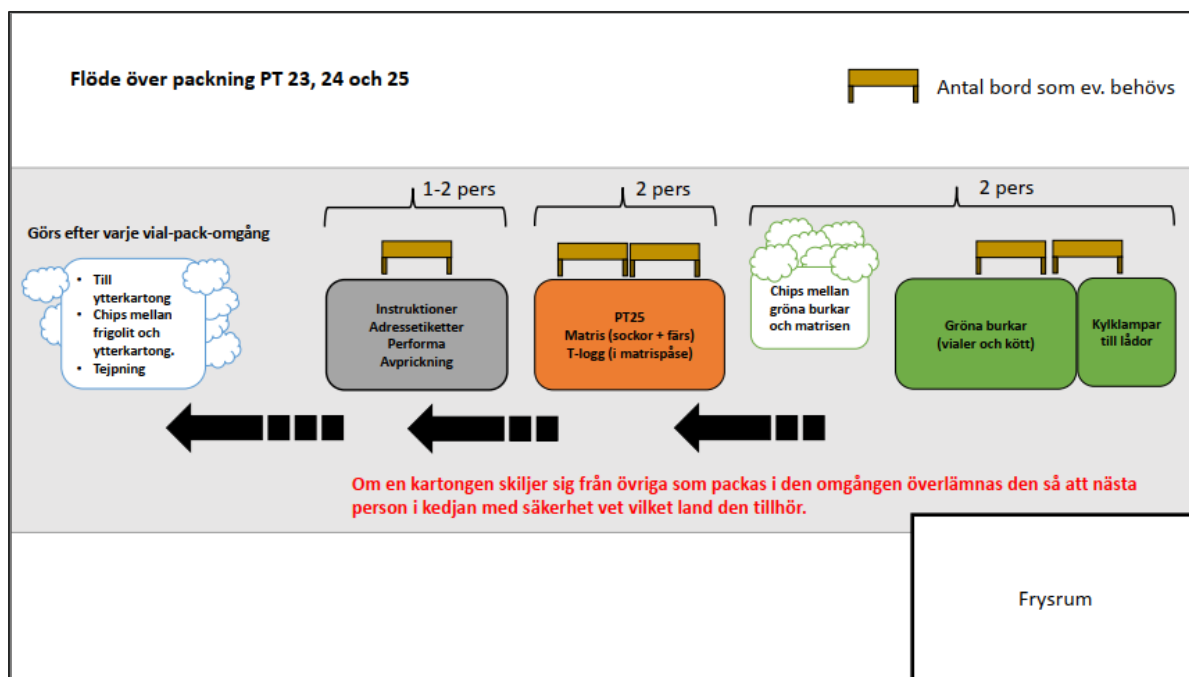
- PT sent out by EURL - *Campylobacter*

- Freezer pack in bottom
- Isolation material in the middle
- Frozen or non frozen material
- Temperature measurements



A curve showing some of the T-logs measurements from the last PT

A.1	A.2	A.3	A.4	A.5	A.6	PT 25	Socks	Edu	Meat	MincedMeat		K1	K2	K3	Content
A.1	A.2					Ja	S	Se	M	F		K1			PT23, PT24 (m, s, e), PT25
A.1	A.2						S	Se	M	F		K1			PT23, PT24 (m, s, e)
A.1	A.2					Ja	S	Se	M	F		K1			PT23, PT24 (m, s, e), PT25
A.1	A.2					Ja	S	Se	M	F		K1			PT23, PT24 (m, s, e), PT25
A.1		A.3					S		M	F			K2		PT23, PT24 (m, s)
			A.4		A.6	Ja		Se	M	F		K1			PT23 $\times$ 2, PT24 (m, e), PT25
A.1									M	F			K2		PT23, PT24 (m)
A.1						Ja			M	F			K2		PT23, PT24 (m), PT25
A.1						Ja			M	F			K2		PT23, PT24 (m), PT25
	A.2				A.6	Ja	S	Se	M			K1			PT23, PT24 (s, e), PT25
	A.2				A.6	Ja	S	Se	M			K1			PT23, PT24 (s, e), PT25



# QUESTIONS?

Contact information:

[therese.jernberg@sva.se](mailto:therese.jernberg@sva.se)

[linda.svensson@sva.se](mailto:linda.svensson@sva.se)

