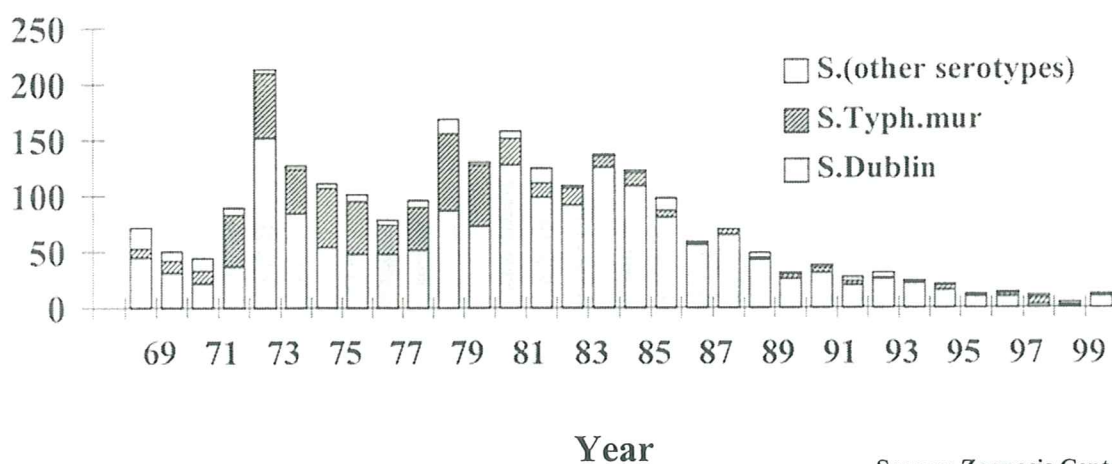
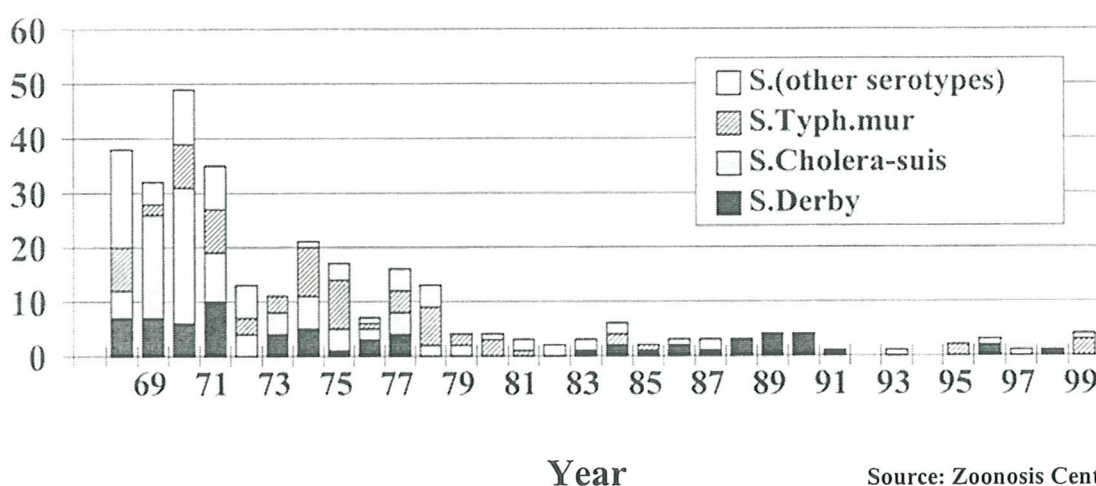


**Figure 1. No of notified cases (infected herds) of salmonella in cattle during 1968 - 1999**



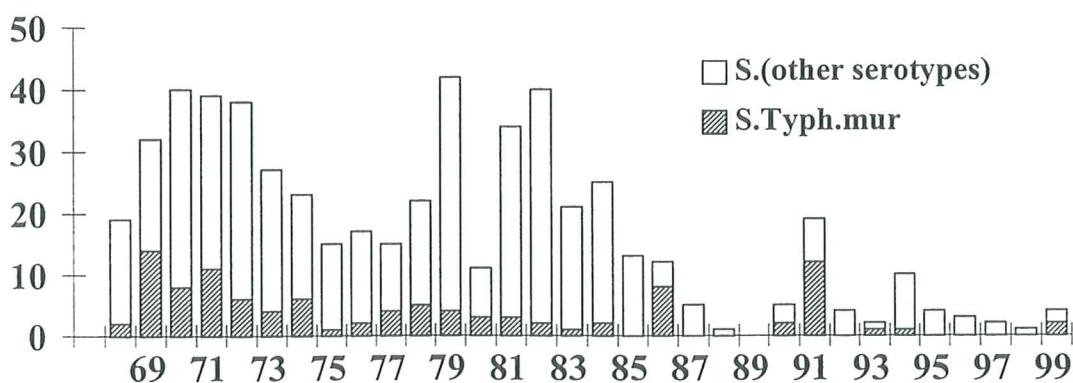
Source: Zoonosis Center

**Figure 2. Number of notified cases (infected herds) of salmonella in pigs during 1968 - 1999**



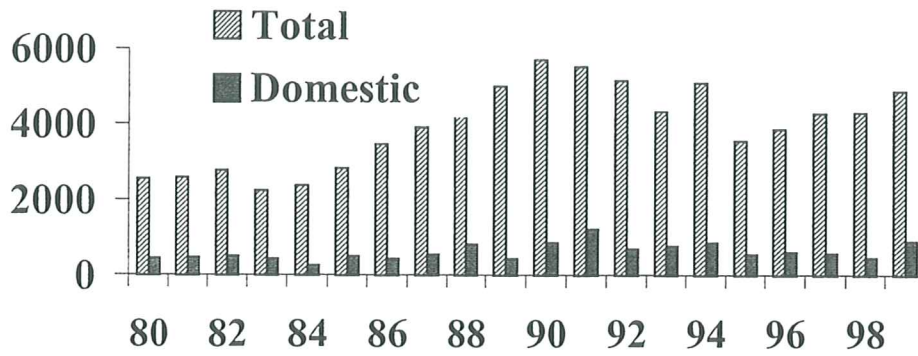
Source: Zoonosis Center

**Figure 3. No of notified cases (infected herds) of salmonella in broilers during 1968-99**



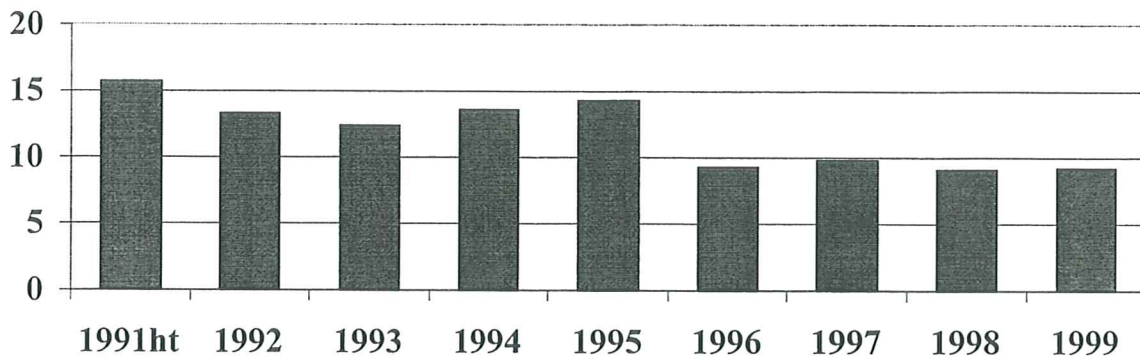
Source: Zoonosis Center

**Figure 4. Number of clinically reported cases of salmonella infections in humans; domestic and total 1980 -1999**



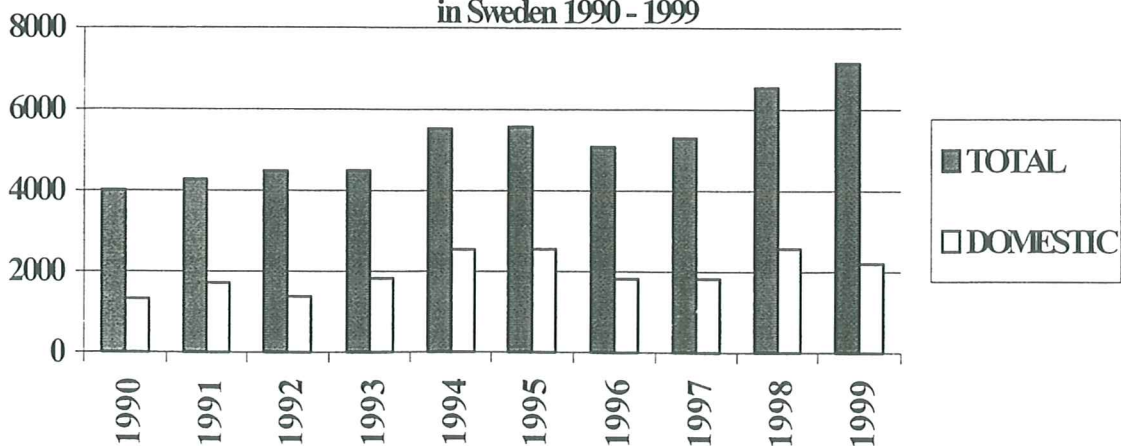
Source:SIIDC

**Figure 5. Prevalence of campylobacter (% pos flocks) in Swedish broiler 1991-1999**



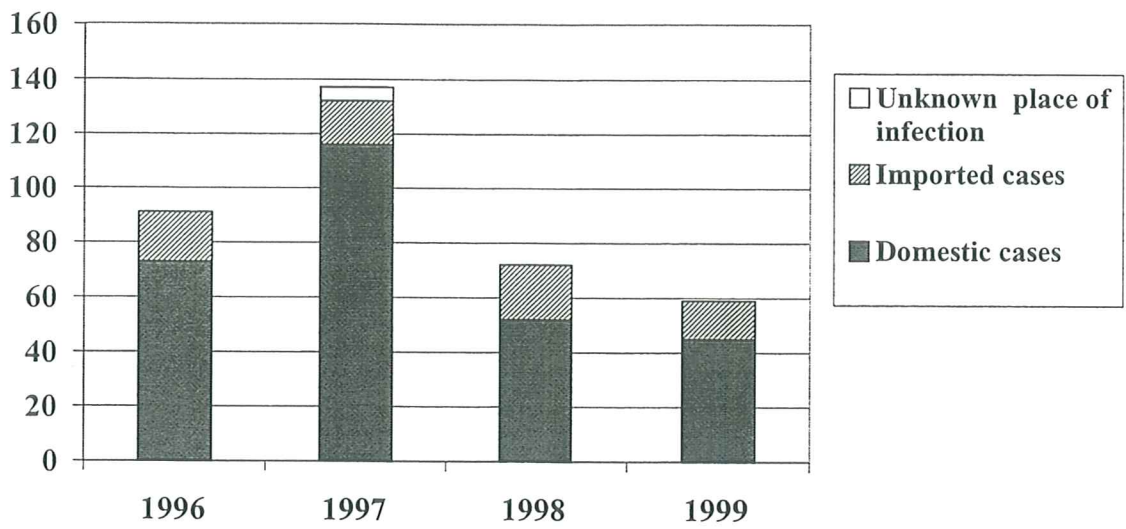
Source: Swedish Poultry Meat Association/EB

**Figure 6. Number of clinically reported cases of campylobacter infection in humans in Sweden 1990 - 1999**



Source: SIIDC

Figure 7. Number of clinically reported cases of EHEC O157 in humans 1996-1999.



Source: SIIDC